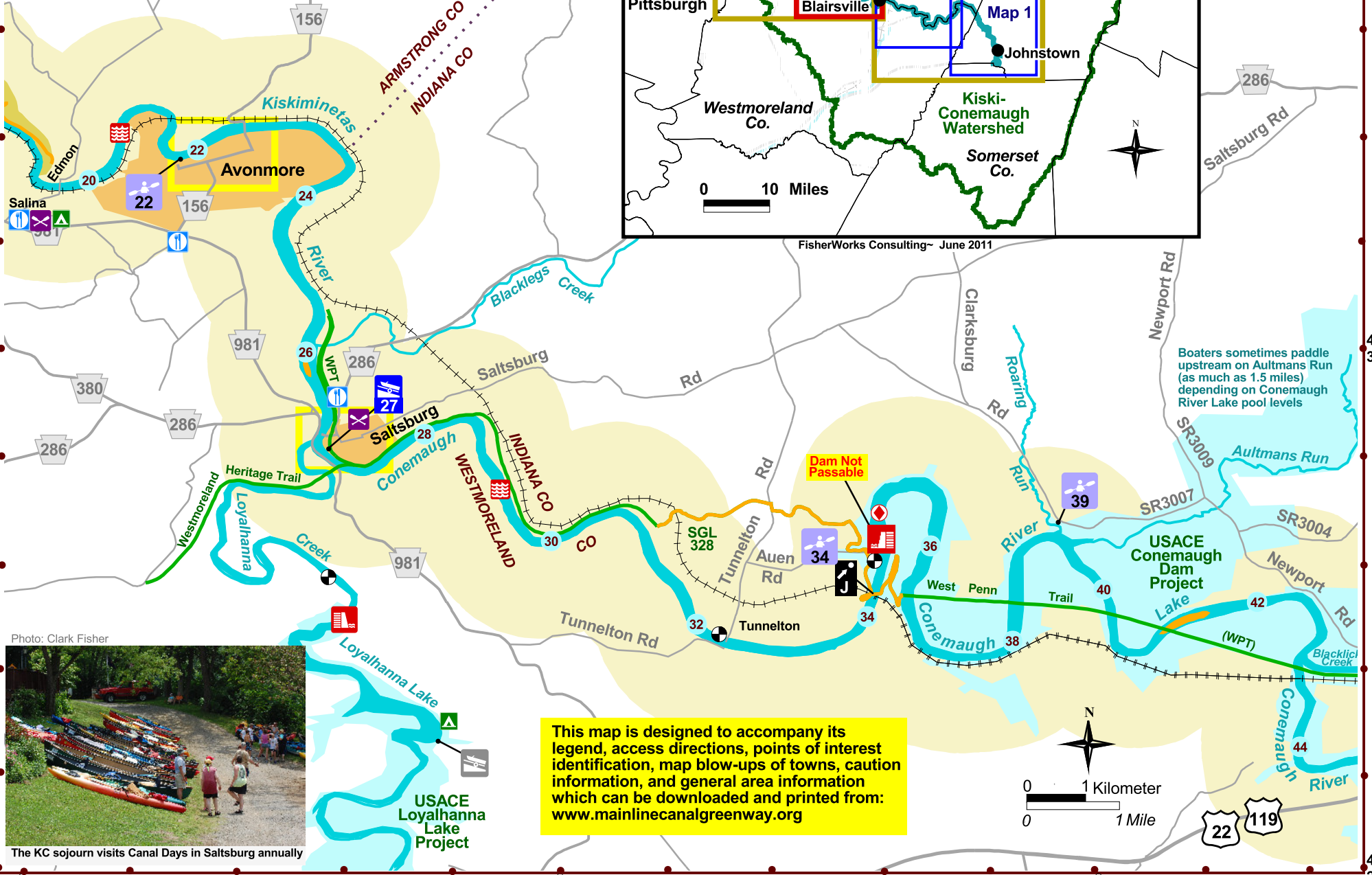
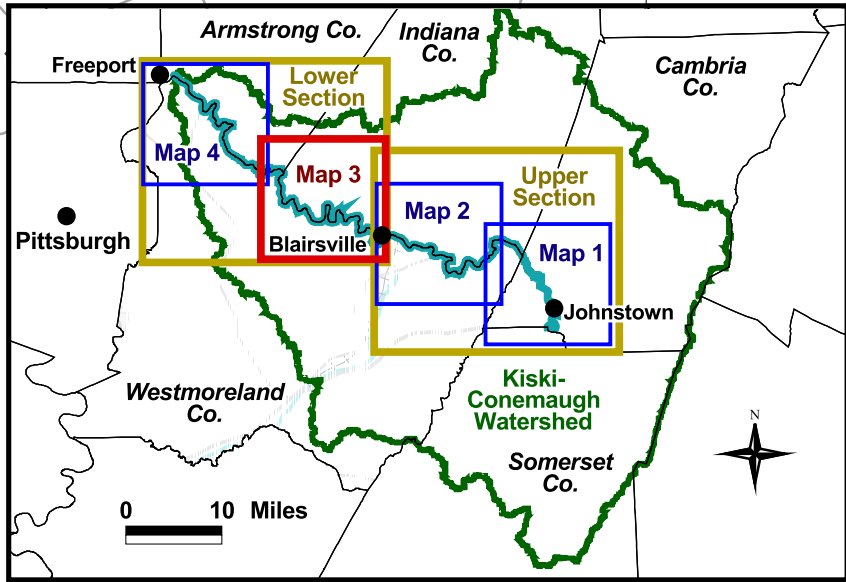


Kiski-Conemaugh Water Trail Lower Section Map 3 of 4



The KC sojourn visits Canal Days in Saltsburg annually

This map is designed to accompany its legend, access directions, points of interest identification, map blow-ups of towns, caution information, and general area information which can be downloaded and printed from: www.mainlinecanalgreenway.org

Boaters sometimes paddle upstream on Aultmans Run (as much as 1.5 miles) depending on Conemaugh River Lake pool levels

Photo: Clark Fisher

FisherWorks Consulting - June 2011